

Installation Instructions of Intelviewer on MAC

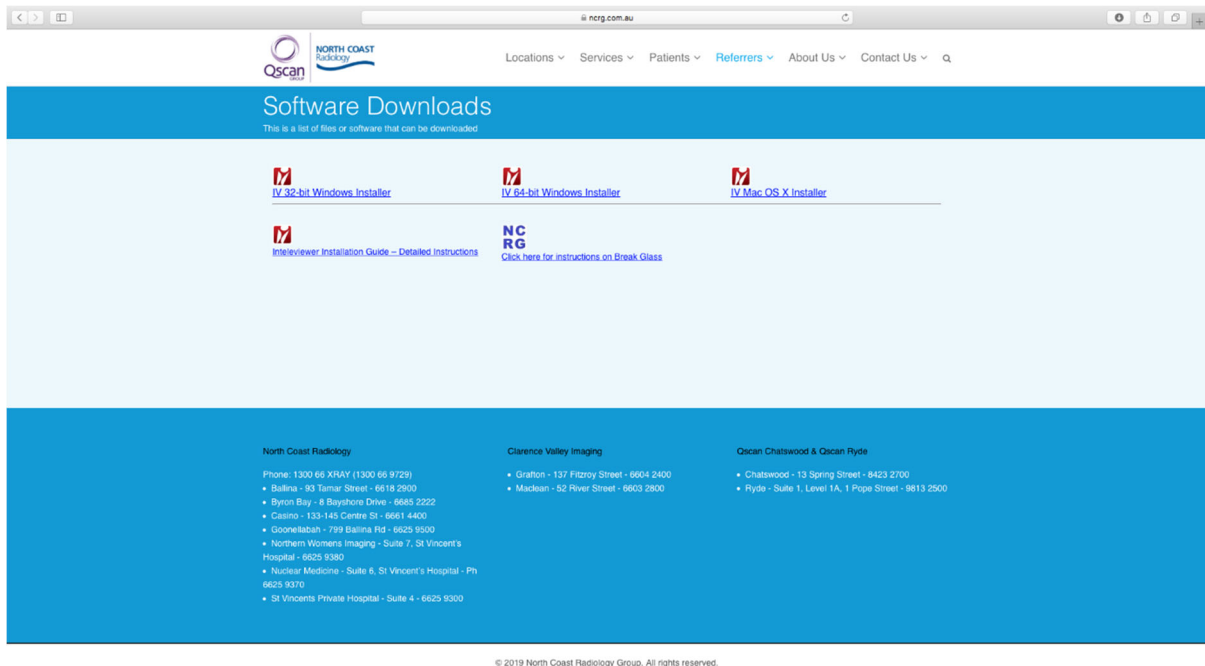
Before commencing install:

- Check that the Apple operating system is Version 10.6.0 or greater
- Upgrade software if version is less

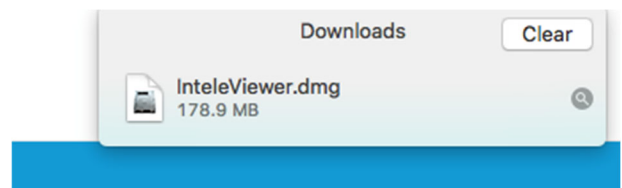
Click on the below link or type the following into your web browser:

<https://www.ncrg.com.au/referrer-support/software-downloads-2>

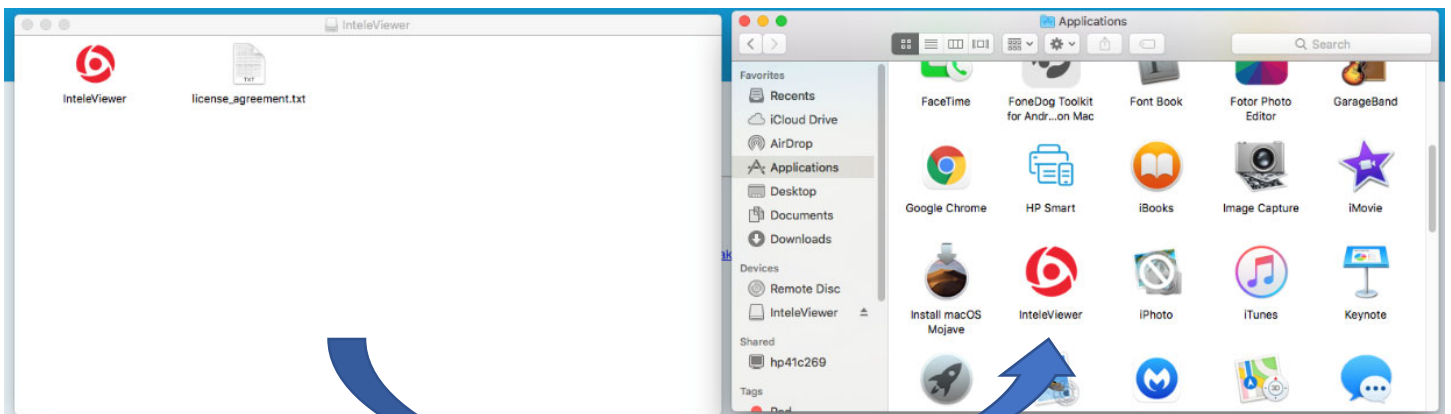
Step 1: Click on the MAC installer to download the Intelviewer.dmg file.



Step 2: Once the download has finished, double-click on the 'Intelviewer.dmg' file to begin the install. The file may appear in your downloads folder, or in the download toolbar in your browser.



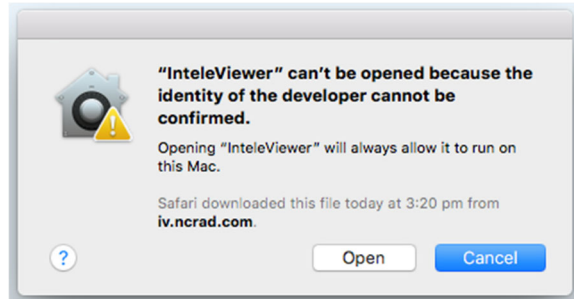
Step 3: Open a Finder session (File>New Finder Window) and drag the Intelviewer application from the disk image to the Applications folder.



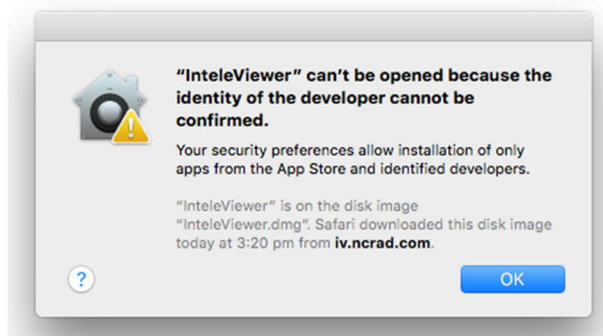
Step 4: Launching Intelviewer - To launch Intelviewer, you must click the Intelviewer application file from the Applications folder.

- Double click Intelviewer from the Applications folder.
- A message will appear stating that Intelviewer cannot be opened due to an unidentified developer. It will be one of two messages:


a) If this, click **open** and continue to **Step 6**

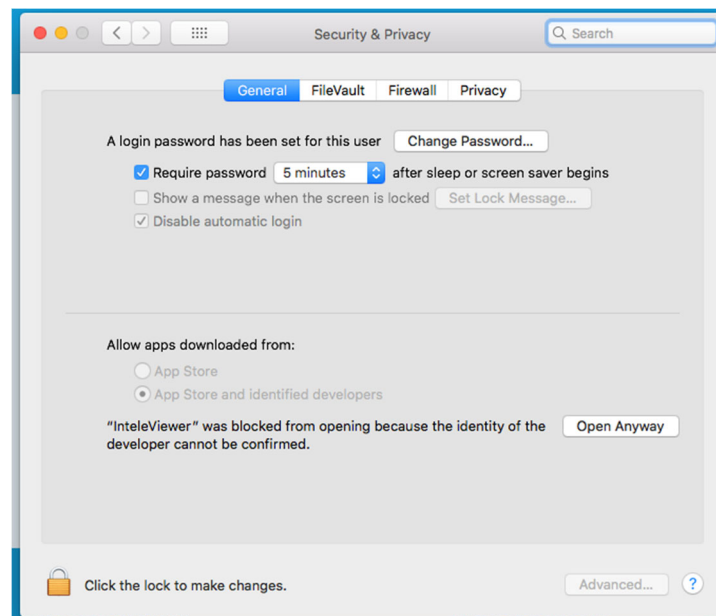


b) If this, click **OK** and continue to **Step 5**

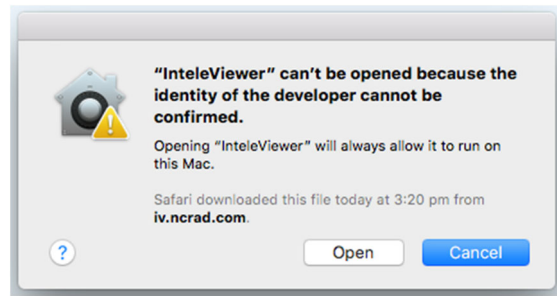


Step 5: Changing security preferences -

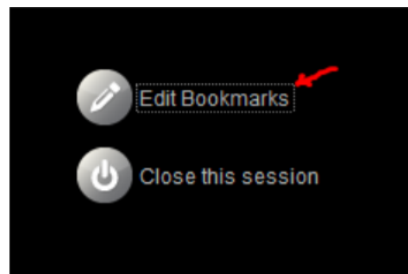
- Click on the search icon (top right corner of desktop) 
- Type **security & privacy**, and press enter.
- In the 'General' tab, you will see a message saying "Intelviewer was blocked", click **Open Anyway**



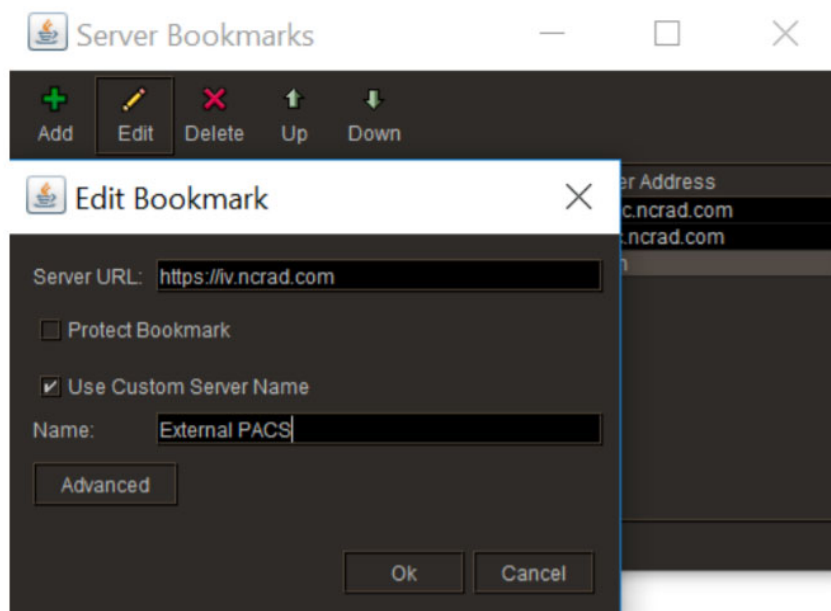
- This message will appear, click **Open**



Step 6: Once launched, it will prompt you to input a bookmark. This will allow access to NCRG database. Click **Edit Bookmark**



Step 7: Click **Add**. Enter **https://iv.ncrad.com** to Server URL. Enter Custom Server Name as you wish. For example, "North Coast Radiology".



Step 8: Login to Intelviewer using supplied username and password from North Coast Radiology referrer support. If you don't have one, please [click here](#) to request access.

Step 9: Once setup is complete, open applications folder (Finder> New Finder Window>Applications) and drag the Intelviewer icon from Applications folder onto desktop to create a shortcut for easier access to application.